

Azure ready? Mapping your journey to the cloud.

Are you...

Foundational Adopter

Organizations with little to no cloud experience. These organizations are still envisioning cloud and require end-to-end guidance for cloud adoption.



Intermediate Adopter

Intermediate. Organizations at this stage have an understanding of cloud technologies, and have already migrated non-priority workloads to the cloud.



Advanced Adopter

Advanced. Organizations that are in the process of cloud adoption and want to optimize workloads on the cloud.



Step 1: Create your business strategy



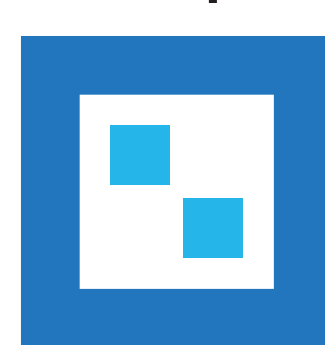
Opportunities for moving to the cloud

Reduced costs, increased deployment speed, global scalability, and increased reliability are just a few opportunities to move to cloud technology.



Business Use Cases

Aurora Health Care migrated its websites to the Microsoft Azure platform and adopted a strategy of continuous innovation. "As a team, we're focused on high-quality solutions and speed. Choosing Azure was a very transformative decision for us."



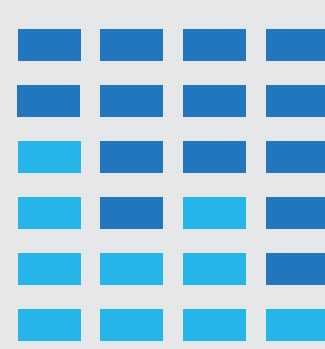
Cost management

An immediate CapEx and often OpEx reduction is realized by moving to the cloud. Building expensive data centers and managing them solely with your own IT is no longer necessary.



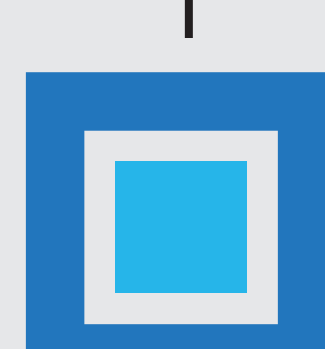
Data governance

Creating and ensuring adherence to common data models, providing extensibility where needed and ensuring compliance with regulations and standards is an essential and available data governance function in Azure.



Governance, Compliance and Risk

Governance, risk management, and compliance (GRC) are three facets that help to ensure that your organization meets its objectives and Microsoft provides you with tools to accomplish this.



Cloud security

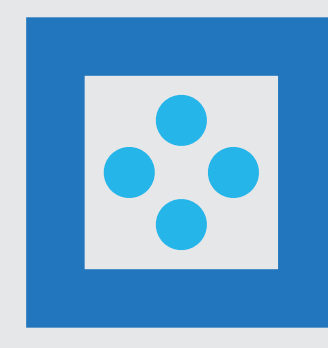
Azure helps provide a highly secure foundation, built from the ground up, to host your infrastructure, applications, and data. We understand the importance of protecting customer data.

Step 2: Create your people strategy



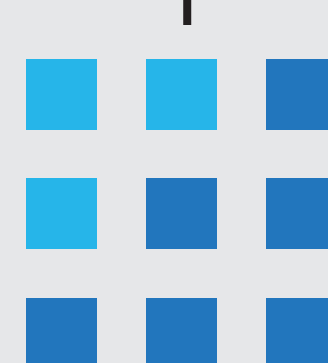
Translation of roles, guidance, and training

IT staff supporting current and emerging cloud technologies will need guidance and training to evolve their IT roles to cloud technologies.



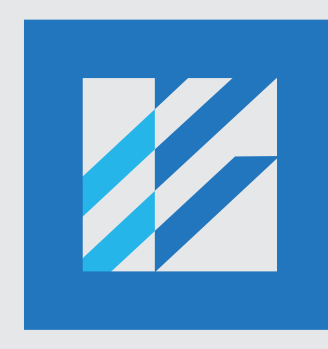
Founding Strategic Team

Cloud migration is a strategic decision, and requires engaging senior members of IT and, indeed, business leaders from around the organization, to understand all aspects of the cloud and which options and approaches make sense for your organization.



Skill readiness paths

IT staff members may feel anxious about their roles and positions as they realize that a different set of skills is needed. Enlisting the help of Microsoft Partners can help embrace changes and update necessary skill-sets.



Cloud Security (CISO Guidance)

One of the best reasons to use Azure for your applications and services is to take advantage of its wide array of security tools and capabilities found in Azure Security.

Step 3: Develop your technology strategy

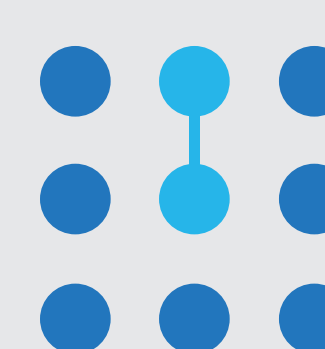
Why Azure

Hybrid Consistency - And unlike our competitors, we provide the flexibility to let you choose the path that's right for you. We're committed to providing a consistent hybrid cloud that supports the approach you pick.



Why Azure

Azure is the most trusted cloud. When you compare Azure cloud offerings with other cloud providers, you will find that Azure has more comprehensive compliance coverage.



Integrate Azure hybrid cloud consistency

Optimize your existing assets by taking a hybrid approach to the cloud. Azure offers hybrid consistency everywhere—in application development, security and management, identity management, and across the data platform.

Operations

Cloud migration significantly impacts the daily operations of an IT department, thereby broadening the scope of IT operations as organizations plan to move to the cloud and also following the transition.



Optimization

The final phase for migration is optimizing your business-critical workloads so that you can ensure costs, security, management, and also monitor the functionality of your workloads in Azure.

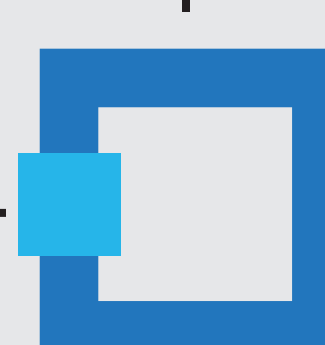


Begin on-boarded

Build confidence with Azure and achieve faster adoption. Microsoft has defined Azure migration and modernization processes to provide guidance and tools that help effortlessly migrate workloads to Azure.

Method to Azure migration

Choosing the right migration approach for different applications in your portfolio can help you extract maximum value from cloud-enabled and innovative technologies and fully embrace the 5 R's of cloud migration: Rehost, Refactor, Re-architect, Rebuild, and Replace.



Define portfolio

Define how to prioritize the migration of applications to the cloud and to understand which applications you should move, when, and how in your portfolio analysis.

Learn more about developing a cloud migration strategy at azure.microsoft.com